

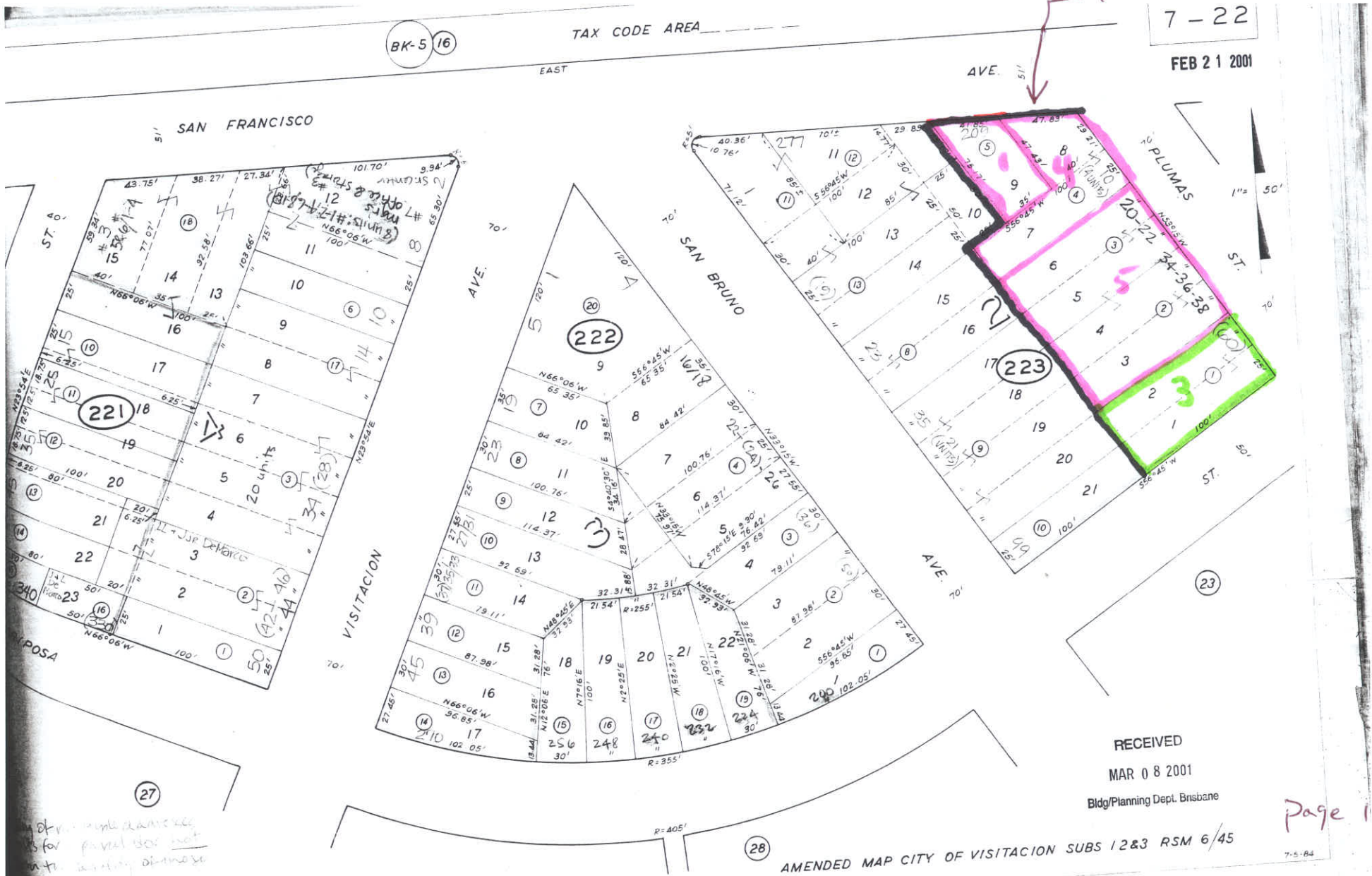
Developed to 20 units/acre or More  
(15 units)

Vacant (3 units if developed at 20 units/ac.)

1 + 2 Developed site with Infill Potential  
(1 existing plus 2 potential)

R-3 Residential District

R-3 Boundary Line



7-22

FEB 21 2001

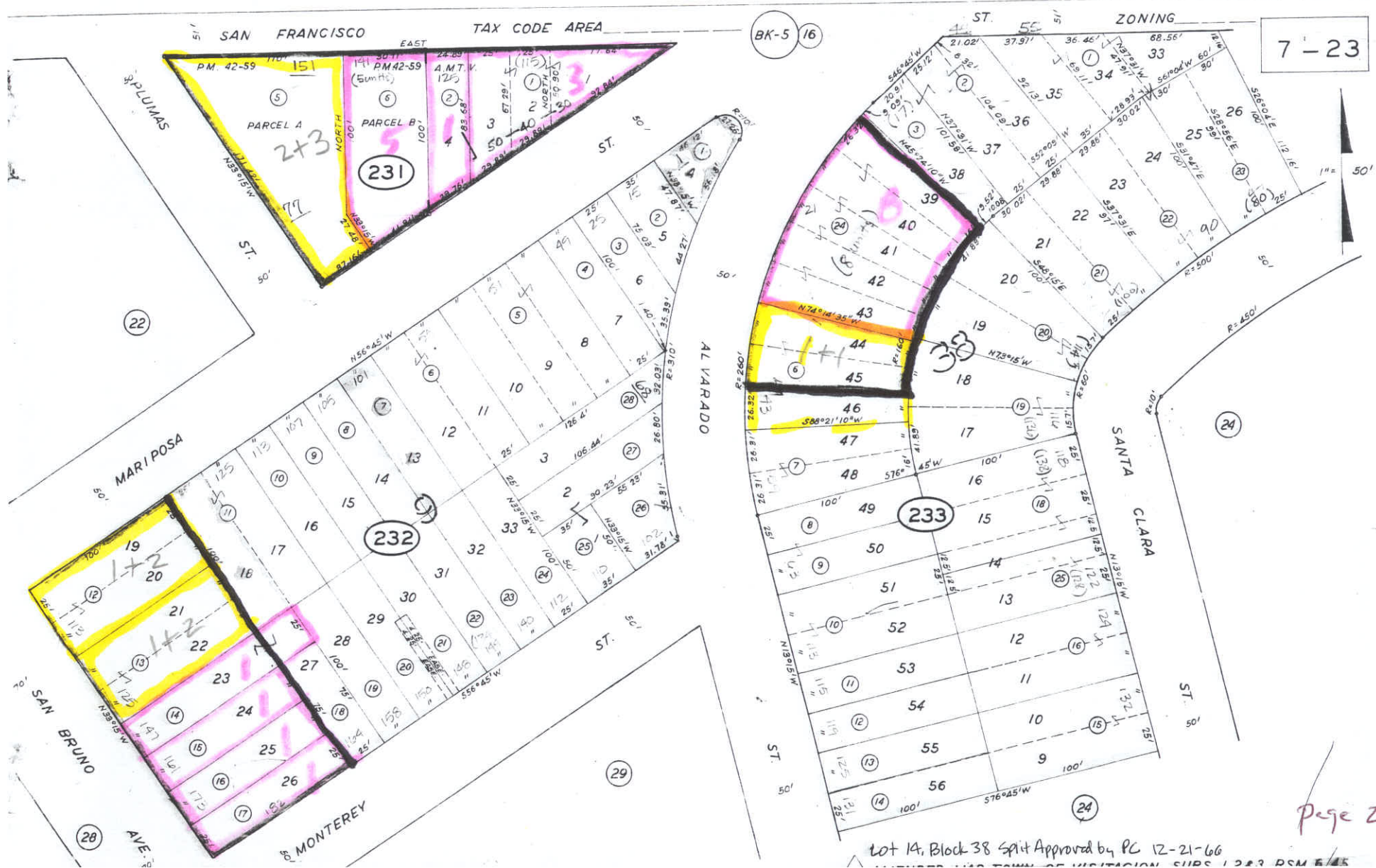
RECEIVED

MAR 08 2001

Bldg/Planning Dept. Bnsbane

Page 1 of 8

AMENDED MAP CITY OF VISITACION SUBS 12&3 RSM 6/45





ldg./Planning Dept. Brisbane

MARIPOSA

ST.

TAX CODE AREA

7-28

NOV 14 1995

$$1'' = 5$$

BRUNO

MONTEREY

VISITACION

MENDOCINO

ASSESSORS PARCELS SHOWN DO NOT  
NECESSARILY CONSTITUTE LEGAL LOTS  
OR BUILDING SITES.

church site

Potential  
shown in  
R-I Dist.

Page 3 of 8

A listing of multiple addresses or units for a parcel does not confirm the legitimacy of the:

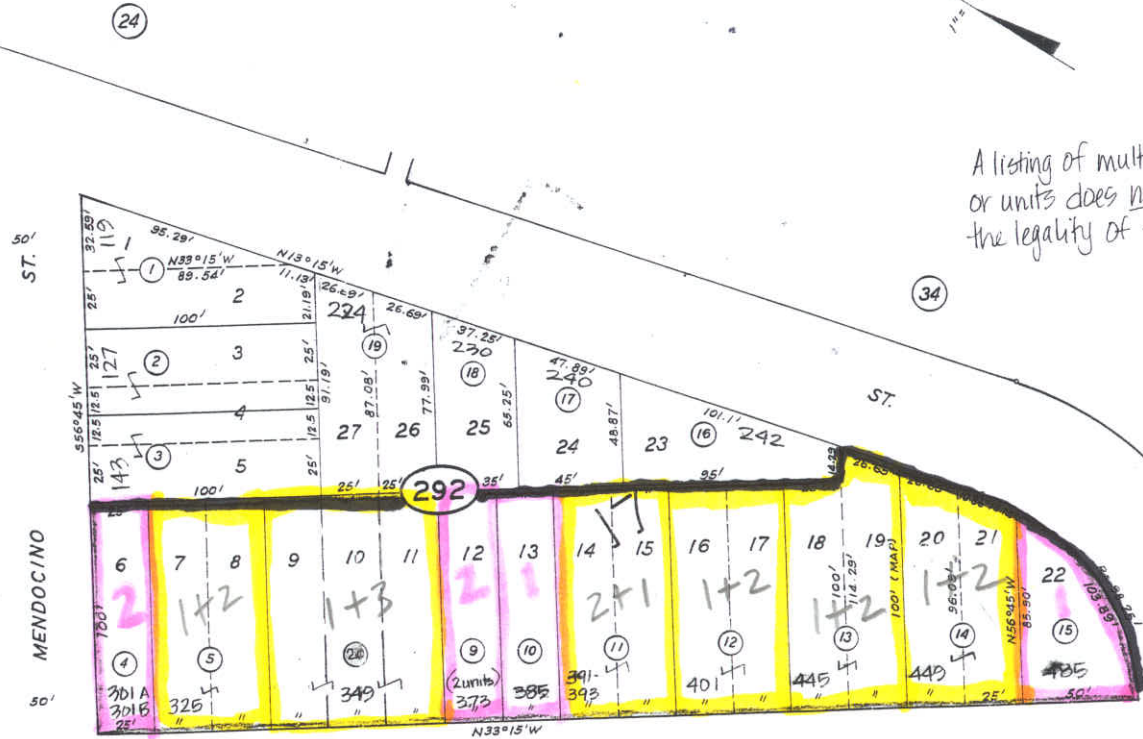
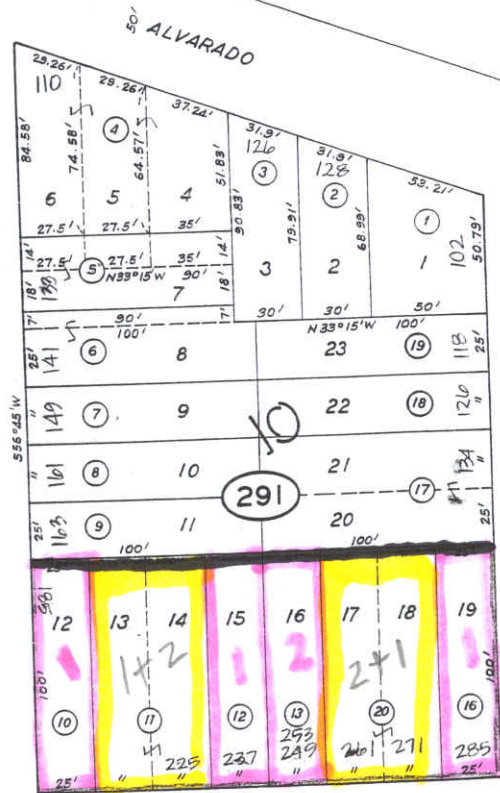
TAX CODE AREA \_\_\_\_\_

RECEIVED

JUN 9 2004

Bldg/Planning Dept. Brisbane

7-29



A listing of multiple addresses  
or units does not confirm  
the legality of those units.

AVE. 70'

70' SAN BRUNO

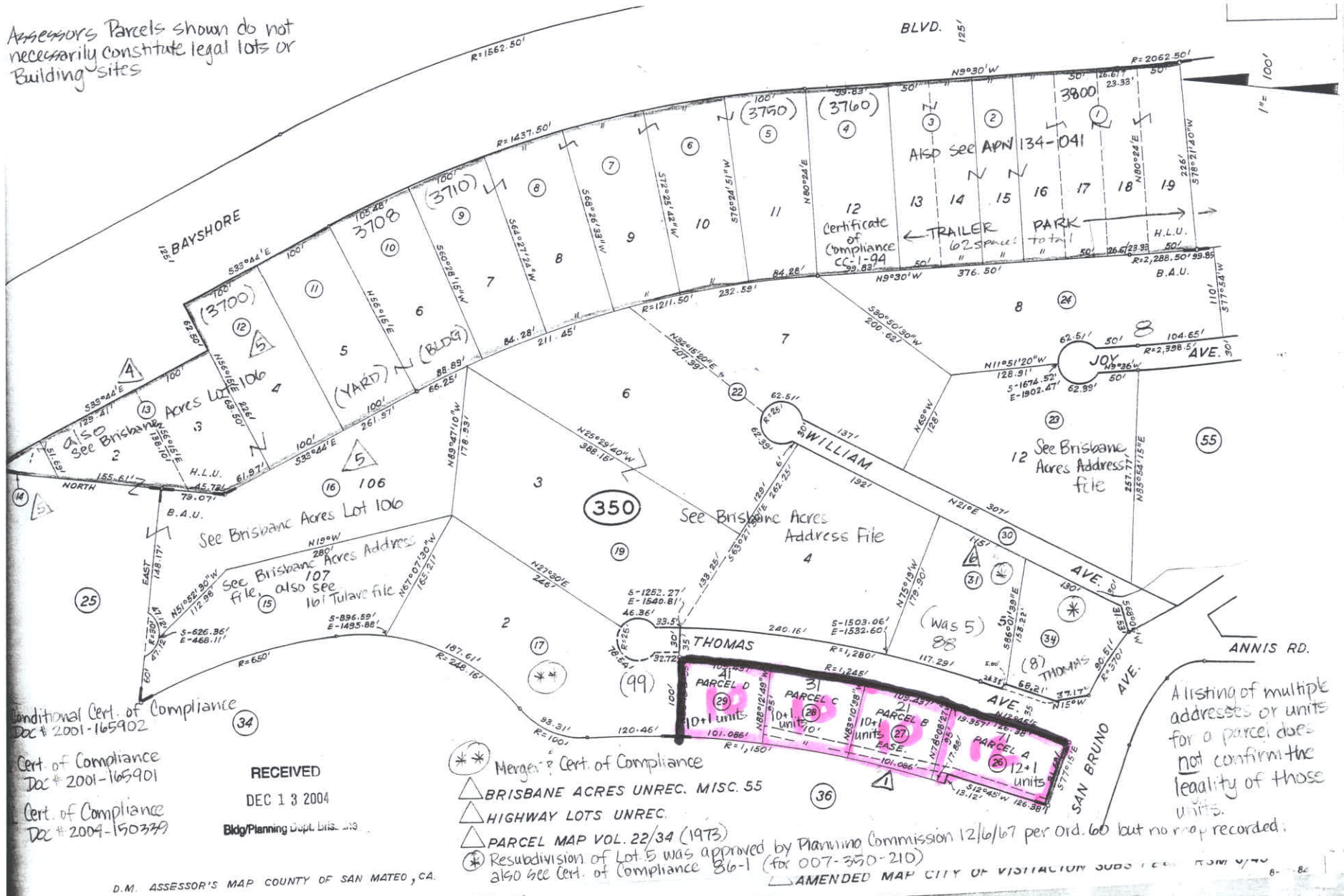
KLAMATH ST.

AMENDED MAP CITY OF VISITACION SUBS 1,2 & 3 RSM 6/45





Assessors Parcels shown do not necessarily constitute legal lots or Building sites

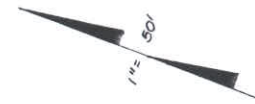




TAX CODE AREA

1-30

OCT 14 2008

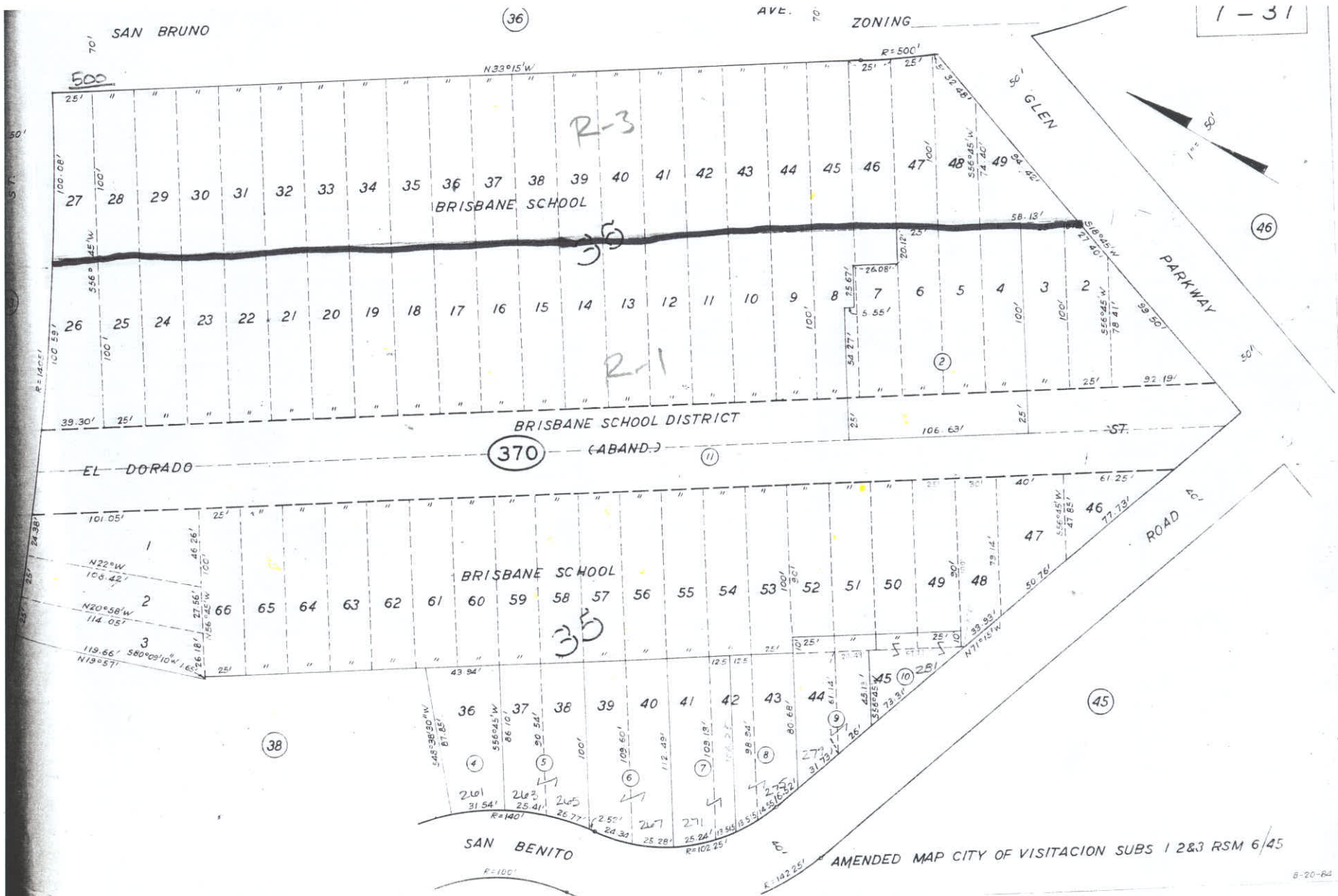


SAN BRUNO

AMENDED MAP CITY OF VISITACION SUBS 12&3 RSM 6/45

6-17-84

Page 7 of 8



AMENDED MAP CITY OF VISITACION SUBS 1 2&3 RSM 6/45